

# Product Sheet for Production

## 2.0 K1/K2/K3 Kambha

The Kambha manages medium volumes of kitchen and garden waste and fits into small spaces conveniently. It has a contemporary form with three modular parts. The 2.0 series are an improvement on the 1.0 series. They were designed after feedback from customers. The 2.0 series is more stable and suited for kitchen waste.

### Summary of the product attributes and evolution:

**Size :** The 10 - 12" diameter is a great size for handling. The overall height is best kept between 36"- 42".

**Volume :** This volume is ideal for composting maintenance. Stirring, lifting, speed of composting all become better and easy on the user with this volume.

### Detail :

**Plastic wire :** The plastic wire in the 2.0 series is hidden from sight as it sits in the inset. The inset is an improvement since it does not allow the leechate to leak out on the sides. The inset also improves stability of the Kambha unit.

**Handle :** The handle in 2.0 K1 & K2 is a band all around the circumference. The 2.0 K3 can be an option where a handle is required.

**Shape / Form :** Many customers like the "pillar" like form.

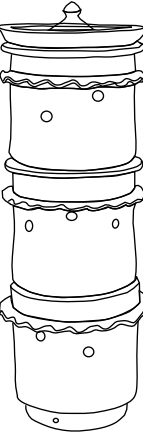
**Weight :** At this size each unit it easy to hold both when full and empty.

**Production :** The form is simple to throw on the wheel and is also beaten a bit.

**Transportation :** The handles get chipped sometimes in transport. Potters have a way to repair these, but this is the weak point.

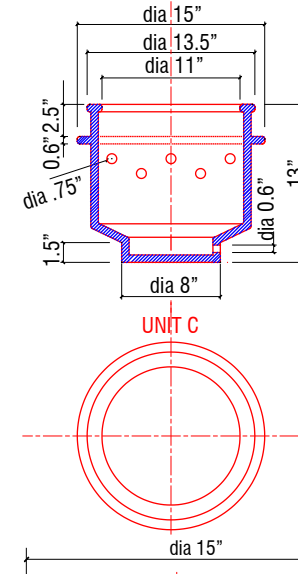
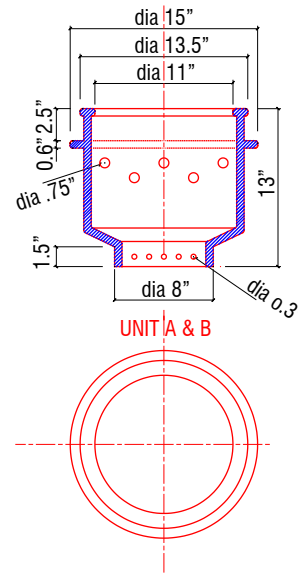
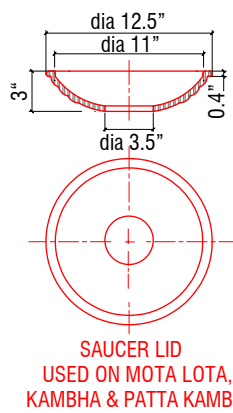
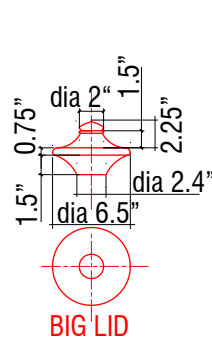
**Construction :** Modular parts are easy to move and replace.

**Alternative:** You can place the 2.0 series into an urli if the customer wants a plant at the bottom for aesthetic reasons.



### Kambha without plant 2.0

5 parts  
Lid for Saucer / Saucer Lid / Unit A / Unit B / Unit C /



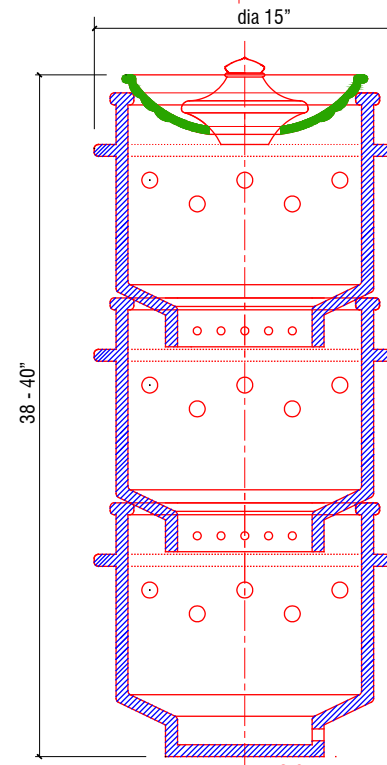
2.0 K1



2.0 K2



2.0 K3



### Difference between the 2.0 K1 /K2/K3

**2.0 K1 :** The first generation product. We call it frill Kambha because the handle all around is crimped like a frill.

**2.0 K2 :** This is the same as the K1 except for the handle which is like a smooth ledge. Makes the Kambha look like a pressure cooker!

**2.0 K3 :** This product has handles on each modular unit. It also has more perforations.

All material is protected by a Creative Commons Licence



**Daily Dump**  
COMPOST AT HOME

2992, 12A Main, HAL IIInd Stage, Bangalore 560 008 | www.dailydump.org  
dailydumpcompost@gmail.com | Landline 41152288

**98442 39660**

**SHEET  
2.0 K  
Production**